



# HOUSE of REPRESENTATIVES

## STATE OF MICHIGAN

### Appropriations Requests for Legislatively Directed Spending Items

---

1. The sponsoring representative's first name:  
Betsy
2. The sponsoring representative's last name:  
Coffia
3. The cosponsoring representatives' names. All cosponsors must be listed. If none, please type 'n/a.' A signed letter from the sponsor approving the co-sponsorship and a signed letter from the member wishing to co-sponsor are required. Attach letters at question #9 below.  
n/a.
4. Name of the entity that the spending item is intended for:  
Charter Township of Elmwood
5. Physical address of the entity that the spending item is intended for:  
10090 E Lincoln Road, Traverse City, MI 49684
6. If there is not a specific recipient, the intended location of the project or activity:  
n/a.
7. Name of the representative and the district number where the legislatively directed spending item is located:  
Betsy Coffia - 103rd House District
8. Purpose of the legislatively directed spending item. Please include how it provides a public benefit and why it is an appropriate use of taxpayer funding. Please also demonstrate that the item does not violate Article IV, S 30 of the Michigan Constitution. This project will provide significant public benefits by enhancing safety, accessibility, and regional connectivity for pedestrians and cyclists in northwest Lower Michigan. The project addresses a critical gap in the regional trail network by connecting the soon to be (summer 2025) extended TART Trail at M-22 to Cherry Bend Park, ensuring a continuous and safe off-road route

for  
nonmotorized users.

Public Benefit:

- **Improved Safety:** Currently, there are no dedicated pedestrian or bicycle facilities on Cherry Bend Road, forcing pedestrians to navigate a busy roadway with vehicular traffic. The proposed separated trail will provide a safe and accessible route for cyclists, walkers, and other nonmotorized users.
- **Regional Connectivity:** The trail will serve as a key link between the TART Trail, the Leelanau Trail, and Cherry Bend Park, enabling continuous nonmotorized travel from Suttons Bay to Acme and beyond. It will connect residents to local businesses, medical offices, a church, parks, and other community assets found along Grand Traverse Bay, including, but not limited to Elmwood Township Marina, Elmwood Township's Grelickville Harbor Park, and the Discovery Pier.
- **Economic and Recreational Impact:** Expanding the nonmotorized trail network supports local businesses by increasing tourism and outdoor recreation opportunities, drawing cyclists and pedestrians to the area. The project aligns with regional efforts to promote healthy, active lifestyles.
- **Environmental and Transportation Benefits:** Encouraging nonmotorized transportation reduces vehicle dependency, lowering emissions and promoting sustainable mobility options.

9. **Attach documents here if needed:**

Attachments added to the end of this file.

10. **The amount of state funding requested for the legislatively directed spending item.**

1800000

11. **Has the legislatively directed spending item previously received any of the following types of funding? Check all that apply.**

["Federal","Local"]

12. **Please select one of the following groups that describes the entity requesting the legislatively directed spending item:**

Local unit government

13. **For a non-profit organization, has the organization been operating within Michigan for the preceding 36 months?**

Not applicable

14. **For a non-profit organization, has the entity had a physical office within Michigan for the preceding 12 months?**

Not applicable

15. **For a non-profit organization, does the organization have a board of directors?**

Not applicable

16. For a non-profit organization, list all the active members on the organization's board of directors and any other officers. If this question is not applicable, please type 'n/a.'

n/a.

17. "I certify that neither the sponsoring representative nor the sponsoring representative's staff or immediate family has a direct or indirect pecuniary interest in the legislatively directed spending item."

Yes, this is correct

18. Anticipated start and end dates for the legislatively directed spending item:

Summer 2025 – Summer 2027

19. "I hereby certify that all information provided in this request is true and accurate."

Yes

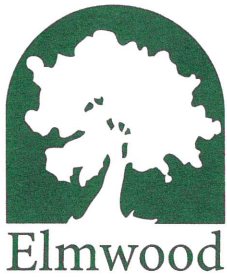
## **Funding Breakdown for Construction of a Connector Between Two TART Trail Segments and Township Facilities, Cherry Bend Park Improvements, and Cherry Bend Roadwork.**

CHERRY BEND PROJECT COSTS	
Road	\$ 1,573,128.00
Trail	\$ 2,504,798.67
Park & Trailhead	\$ 707,006.25
	<u>\$ 4,784,932.92</u>

Requested Funding for Construction of a Connector Between Two TART Trail Segments and Township Facilities, Cherry Bend Park Improvements, and Cherry Bend Roadwork					
		With Road	Without Road	Just Trail	
	Total Funding	\$4,784,932.92	\$3,211,804.92	\$2,504,798.67	Status
TTCI Funds	\$ 1,093,000.00	\$3,691,932.92			Funds Approved
Road Comm	\$ 609,125.00	\$3,082,807.92			Anticipated Funds
Twp	\$ 357,484.30	\$2,725,323.62	\$2,854,320.62	\$2,147,314.37	Anticipated Funds
TAP Grant	\$1,029,937.20	\$1,695,386.42	\$1,824,383.42	\$1,117,377.17	Grant Submitted
Cycling Club	\$ 25,000.00	\$1,670,386.42	\$1,799,383.42	\$1,092,377.17	Grant Submitted by 3/31
Trust Fund	\$ 400,000.00	\$1,270,386.42	\$1,399,383.42	\$692,377.17	Grant Submitted by 4/1
Consumer's B	\$5,000 - \$50,000	\$1,220,386.42	\$1,349,383.42	\$642,377.17	Grant Submitted by 4/15
	Funding still needed	\$1,220,386.42	\$1,349,383.42	\$642,377.17	See below note
Note that TTCI has approved \$1,093,000 in funds for improvements to Cherry Bend, but not all of this will go to the Trail					

Note that we have submitted a CDS request through Gary Peters office and our request for State funding through you. This is not referenced in the above table. The \$1.8 million is our gap funding (assuming no Trust Fund funds).





## The Charter Township of Elmwood, Leelanau County

10090 E. Lincoln Rd., Traverse City, MI 49684

Office (231) 946-0921 • Fax (231) 946-9320

*Via email and hand delivery*

Representative Coffia

Anderson House Office Building

124 N Capitol Avenue

Lansing, MI 48933

March 25, 2025

Re: FY 2025-2026 Appropriations Request for Regional Trail Connector and Cherry Bend Park Satellite Trailhead Project

Dear Representative Coffia,

On behalf of the Township, thank you for your interest in our project and taking the time to speak with us today. Enclosed you will find our written request for FY 2025-2026 Appropriations. This project has been decades in the making and we are excited to move forward; receiving state funding will help make this project a reality.

As you review our application, if there are any questions, please do not hesitate to reach out.

On behalf of Elmwood Township, thank you for your time and consideration.

Jeff Shaw

Township Supervisor

Enclosures:

FY 2025-2026 Appropriations Request

Cherry Bend Trail Connector Project Area (M22 to Cherry Bend Park)

Anticipated Costs for Trail (M22 to Cherry Bend Park)

Cherry Bend Park Conceptual Plans

Cherry Bend Park Estimated Costs

Support from the following organizations:

- The City of Traverse City. Liz Vogel, City Manager;
- Cherry Capital Cycling Club (CCCC). James Pecott, President;
- Traverse Area Recreation and Transportation Trails, Inc. (TART). Julie Clark, CEO;
- Michigan Department of Transportation (MDOT). Dan Wagner, Traverse City Transportation Service Center Manager;
- Discovery Pier. Matt McDonough, CEO;
- Leelanau County Road Commission. Resolution of Support from Road Commission;
- Disability Network Northern Michigan. Lacey Rouse, Independent Living Specialist and ADA Coordinator;
- Norte Youth Cycling. Jill Sill, Executive Director; and
- Charter Township of Elmwood. Resolution of Support from the Township Board.
- Traverse Transportation Coordinating Initiative (TTCI). 1/29/25 Policy Board Minutes showing unanimous vote of approval for funds by local officials.



## FY 25-26 Appropriations Request

**Date:** March 21, 2025  
**Name of project:** The Cherry Bend Regional Trail Connector and Cherry Bend Park Satellite Trailhead Project  
**Project location:** Cherry Bend Road, Elmwood Township, Leelanau County;  
10163 E Avondale Lane, Elmwood Township, Leelanau County  
**Counties served:** Leelanau County, Grand Traverse County  
**Funding recipient(s):** Charter Township of Elmwood  
*(include any associated lobbying, consulting, or public relations firms, if applicable)*  
**Requestor type of organization:** Local municipal government  
*(nonprofit, local unit of government, etc.)*

**Amount of state funding requested:** \$1,800,000  
**Total cost of project:** \$3,211,804.92  
**Boilerplate section:** unknown  
**State department to disperse funds:** unknown

**Primary contact:** Jeff Shaw  
**Position/relationship to the project:** Township Supervisor  
**Phone number:** 231-946-0921  
**Email address:** supervisor@elmwoodmi.gov

### **Project description and funding proposal purpose:**

The Cherry Bend Regional Trail Connector and Cherry Bend Park Satellite Trailhead Project will provide a safe, off-road connection for pedestrians and cyclists between the soon to be extended TART Trail along M-22 and the Leelanau Trail at Cherry Bend Park. This 10-foot-wide, approximately 4,400-foot-long trail will close a critical gap in the regional trail network, ensuring safe, accessible, and continuous nonmotorized travel. The project will also include a new trailhead at Cherry Bend Park, offering parking, signage, and amenities for trail users.

The TART Trail extension along M-22, planned for construction as part of an MDOT project scheduled for completion in Summer 2025, will terminate at Cherry Bend Road. Without our regional trail connector project, pedestrians and cyclists from the M-22 trail will be forced onto the shoulder of Cherry Bend Road or M-22 or to backtrack, all unsafe and impractical options. Our project addresses this issue by extending the trail westward to Cherry Bend Park, connecting along the way with the Leelanau Trail where users can access an existing regional trailhead. The satellite trailhead at Elmwood Township's Cherry Bend Park will provide safe, accessible parking for all users as well as access to additional recreational facilities. Our trail project will connect two regional pathways, creating a safe off-street route for users from Suttons Bay Township to Acme, while also making itself available to immediately adjacent residential neighborhoods. By constructing a trail connection between the Township's Cherry Bend Park and M22, there will be a safe, off-street, pedestrian connection between a medical practice,

veterinarian office, church, Thompson Surgical Instruments, various smaller businesses, the Cedar Lake Boat Launch, Cherry Bend TART Trailhead, the Grand Traverse Regional Arts Campus, two voting precincts, Township Hall, Cherry Bend Park, and a County Recycling Site.

This project aligns with all relevant local and state planning efforts to expand nonmotorized infrastructure, promoting safety, accessibility, and recreational opportunities for residents and visitors. The funding request will support the construction of the trail and related infrastructure, ensuring the completion of a vital transportation and recreation link in Northwest Lower Michigan.

**Description of funding proposal's public benefit and the need for state funding:**

The Cherry Bend Regional Trail Connector and Cherry Bend Park Satellite Trailhead Project will provide significant public benefits by enhancing safety, accessibility, and regional connectivity for pedestrians and cyclists in northwest Lower Michigan. The project addresses a critical gap in the regional trail network by connecting the soon to be (summer 2025) extended TART Trail at M-22 to Cherry Bend Park, ensuring a continuous and safe off-road route for nonmotorized users.

**Public Benefit:**

- **Improved Safety:** Currently, there are no dedicated pedestrian or bicycle facilities on Cherry Bend Road, forcing pedestrians to navigate a busy roadway with vehicular traffic. The proposed separated trail will provide a safe and accessible route for cyclists, walkers, and other nonmotorized users.
- **Regional Connectivity:** The trail will serve as a key link between the TART Trail, the Leelanau Trail, and Cherry Bend Park, enabling continuous nonmotorized travel from Suttons Bay to Acme and beyond. It will connect residents to local businesses, medical offices, a church, parks, and other community assets found along Grand Traverse Bay, including, but not limited to Elmwood Township Marina, Elmwood Township's Grelickville Harbor Park, and the Discovery Pier.
- **Economic and Recreational Impact:** Expanding the nonmotorized trail network supports local businesses by increasing tourism and outdoor recreation opportunities, drawing cyclists and pedestrians to the area. The project aligns with regional efforts to promote healthy, active lifestyles.
- **Environmental and Transportation Benefits:** Encouraging nonmotorized transportation reduces vehicle dependency, lowering emissions and promoting sustainable mobility options.

*Need for State Funding:*

The total estimated cost of the Cherry Bend Regional Trail Connector and Cherry Bend Park Satellite Trailhead project is \$3,211, 805. While local stakeholders, including the Leelanau County Road Commission and Elmwood Township are both providing funding and actively pursuing grant opportunities, there remains a substantial funding gap.

State appropriated funding is essential to ensure this critical project is completed. Without state support, the project may be delayed or reduced in scope, leaving the dangerous gap in the trail network unaddressed. Investing in this infrastructure will provide long-term benefits by

improving safety, accessibility, and regional mobility, aligning with state goals to enhance nonmotorized transportation and recreational opportunities.

**Please provide a description of any research or evidence backing the project's approach to its stated goal (include any attachments):**

Connecting regional trails in Michigan has demonstrated significant benefits across economic, safety, accessibility, and community well-being metrics. This is backed up by both independent studies and the State's own research.

*Economic Impact*

- **Statewide Economic Contribution:** In 2022, outdoor recreation contributed \$12.36 billion to Michigan's economy, supporting nearly 119,000 jobs. This marks the largest recorded measure for overall outdoor recreation value added to Michigan's GDP since 2012 (MEDC, 2023).
- **Little Traverse Wheelway:** A 2021 study from the Top of Michigan Trails Council reported approximately 116,000 annual users for the Little Traverse Wheelway, generating a direct economic impact of \$1.4 million. Notably, one-quarter of users paid for lodging, leading to an estimated indirect economic impact of \$4.2 million.

*Safety and Accessibility*

- **Michigan Department of Natural Resources Trails Plan:** The 2022–2032 plan emphasizes that well-planned trails connect people, communities, and destinations, and enhance Michigan's quality of life by supporting health and wellness, enhancing economies, and improving safety.
- **Accessible Recreation:** Michigan's Department of Natural Resources, both in their trails plan and in their funding efforts, emphasizes making outdoor spaces inclusive, ensuring state parks, campgrounds, boating launches, game areas, and trails are accessible to all residents and visitors. This is especially true for seniors and others with limited mobility which the Cherry Bend Trail Project will directly address with fully accessible trails and trailhead amenities. Disability Network Northern Michigan has submitted a letter of support for this project.

Integrating well-planned trailheads, such as the one proposed at Cherry Bend Park, is essential for the success and usability of trail projects. Trailheads serve as primary access points and significantly enhance user experience by providing necessary amenities and fostering community engagement. The Cherry Bend Park Trailhead will offer facilities such as fully accessible parking, restrooms, water fountains, and seating areas, making trails more user-friendly and accommodating to a diverse range of visitors. We will provide signage and kiosks with maps, trail rules, and safety information, helping users navigate the trail system confidently. The Trailhead will also serve as a venue for community events such as organized rides and local celebrations, fostering social connections and attracting visitors, further stimulating the local economy through increased patronage of nearby businesses.

**Have you sought any community input on this project? If so, please provide a brief description:**

Yes, Elmwood Township has actively sought and incorporated community input for the Cherry Bend Regional Trail Connector and Cherry Bend Park Satellite Trailhead project through comprehensive planning initiatives, most notably the Elmwood Township Community Park, Recreation, Open Space, and Greenways Plan and the North Region Active Transportation Plan.

*Elmwood Township Community Park, Recreation, Open Space, and Greenways Plan:* This plan, focusing on the township's recreational development over a five-year period, was formulated with extensive public engagement. The process included community surveys, public hearings, and consultations with local stakeholders to accurately reflect residents' needs and aspirations. The plan emphasizes the development of non-motorized trails, specifically highlighting the Cherry Bend Trail, to enhance connectivity and recreational opportunities within the township.

*North Region Active Transportation Plan:* Covering 21 counties in northern Michigan, this plan serves as a strategic tool for enhancing non-motorized transportation networks. Developed through collaboration among the Michigan Department of Transportation (MDOT), regional planning agencies, local governments, and community stakeholders, the plan identifies major gaps in the non-motorized transportation system, including the need for the Cherry Bend Trail. Public input was integral to the planning process, ensuring that the identified projects align with community priorities and regional connectivity goals.

**Has this project or requesting entity received state funding in the past? If so, please provide a brief description, including previous state funding sources, fiscal years, and amounts:**

No, neither Elmwood Township or The Cherry Bend Regional Trail Connector and Cherry Bend Park Satellite Trailhead project have received state appropriations in the past.

**How long has funding been sought for this project? How long has state funding been sought for this project?**

Funding for the Cherry Bend Regional Trail Connector and Cherry Bend Park Satellite Trailhead Project has been actively pursued for several years as part of broader efforts to enhance nonmotorized transportation and connectivity in Elmwood Township. The need for this trail connection was first identified in local and regional planning documents several years ago. Since then, Elmwood Township, the Leelanau County Road Commission, and partner organizations have committed funding toward planning and engineering as well as construction and are working toward securing additional funding sources to move the project forward.

Formal efforts to secure public funding began in early 2025, with the January 2025 award of \$1,093,000 from the Traverse Transportation Coordinating Initiative (TTCI), the regional MPO. Additionally, a TAP Grant application was submitted, and a Michigan Natural Resources Trust Fund application is planned for April 1, 2025 along with several other grant application to private and corporate funding sources.

**Will this project be receiving other funding? If so, how much and what are the funding sources?**

Yes, The Cherry Bend Regional Trail Connector and Cherry Bend Park Satellite Trailhead project has commitments of other funding and we anticipate additional support.

- **Traverse Transportation Coordinating Initiative (TTCI) Funding:** In January 2025, \$1,093,000 was awarded through TTCI. These funds are allocated for both roadwork and trail construction along Cherry Bend Road. Note that TTCI is a Metropolitan Planning Organization which contains has voting members from MDOT, Grand Traverse Road Commission, Leelanau County Road Commission, Grand Traverse County, Leelanau County, Acme Township, Bingham Township, Blair Township, East Bay Township, Elmwood Township, Garfield Township, Green Lake Township, Long Lake Township, Peninsula Township, the Bay Area Transportation Authority (BATA), and the City of Traverse City. The vote to award the \$1,093,000 in funding to Cherry Bend Road was unanimous by both the technical committee (local planners) and policy board (local officials); our region wants to see this project move forward.
- **Pending Transportation Alternatives Program (TAP) Grant:** The Leelanau County Road Commission has submitted a TAP Grant application for \$1,029,937.20, which is currently under review.
- **Expected Michigan Natural Resources Trust Fund Application:** Elmwood Township plans to submit a \$400,000 grant application to the Trust Fund by April 1, 2025 to help fund the trail portion of the project.

These sources will be combined with local contributions from both Elmwood Township and the Leelanau County Road Commission and planned future funding efforts to complete the project. However, the 2025 completion of the TART extension to Cherry Bend and the absence of any connections beyond that intersection makes it essential that we seek all possible resources as quickly as possible.

**If the funding for this project is granted, will funds be matched? If so, how much and what are the funding sources?**

Yes, funding for the Cherry Bend Trail project will be matched through a combination of secured and pending sources.

- **Confirmed Matching Funds:**
  - Traverse Transportation Coordinating Initiative (TTCI): \$1,093,000 (awarded in January 2025)
- **Pending and Expected Matching Funds:**
  - Transportation Alternatives Program (TAP) Grant: \$1,029,937.20 (application submitted)
  - Michigan Natural Resources Trust Fund (MNRTF): \$400,000 (application to be submitted by April 1, 2025)
  - Leelanau County Road Commission (LCRC) and Elmwood Township Contributions: The exact amount of their contributions is pending, but both entities are committed to funding portions of the project.
  - Additional private, public and corporate fundraising: amount TBD.

**Please describe any potential opposition, including organizations or arguments, to the project or funding proposal:**

There is no known opposition to the project.

**Please list any other supporting organizations regarding this funding request (attach any letters of support):**

Several organizations have expressed support for the Cherry Bend Regional Trail Connector and Cherry Bend Park Satellite Trailhead Project due to its importance in enhancing regional connectivity, safety, and recreation. These organizations recognize the trail's significance in closing a critical gap in the nonmotorized transportation network and have actively supported funding efforts.

**Supporting Organizations:**

1. **TTCI.** As mentioned above, TTCI is a Metropolitan Planning Organization which contains has voting members from MDOT, Grand Traverse Road Commission, Leelanau County Road Commission, Grand Traverse County, Leelanau County, Acme Township, Bingham Township, Blair Township, East Bay Township, Elmwood Township, Garfield Township, Green Lake Township, Long Lake Township, Peninsula Township, the Bay Area Transportation Authority (BATA), and the City of Traverse City. The vote to award the \$1,093,000 in funding to Cherry Bend Road was unanimous by both the technical committee (local planners) and policy board (local officials). There is no formal letter of support from TTCI, but the fact that the vote on the project was unanimous, it is clear our region supports this project.
2. **City of Traverse City.** Adjacent municipality who is in full support of regional connections. They are also a member of TTCI and they voted in favor of approving the \$1,093,000 mentioned above. *Letter of Support attached.*
3. **Cherry Capital Cycling Club (CCCC)** is a strong advocate for cycling infrastructure improvements in Northwest Michigan. *Letter of Support is attached.*
4. **TART Trails, Inc.** is a regional nonprofit dedicated to expanding and maintaining trail networks in the Traverse City area and has been involved in planning efforts and supports the Cherry Bend Trail as a key connection between the Leelanau Trail and the new TART extension along M-22. *Letter of Support is attached.*
5. **Michigan Department of Transportation** is a key partner as we have been working with them to incorporate non-motorized enhancements as they proceed with the planned M-22 reconstruction. *Letter of Support is attached.*
6. **Discovery Pier** is a non-profit community space along Grand Traverse Bay and the planned TART Trail extension that offers maritime recreation and learning opportunities. *Letter of Support is attached.*
7. **Leelanau County Road Commission (LCRC)** is a key partner in project planning and the submission of funding applications, including a TAP Grant request for \$1,029,937.20. *Resolution regarding the TAP Grant submittal is attached.*
8. **Traverse Connect** is the lead economic development organization for the Grand Traverse region, which supports area businesses through a combination of business attraction and retention strategies, talent development efforts, and strategic coordination among partner agencies. They thoughtfully recognize the value of non-motorized trails in growing the regional economy and have supported the project from its earliest planning stages. In late February 2025, Warren Call, President & CEO of Traverse Connect spoke with legislators, including Betsy Coffia, regarding this project.



9. **Networks Northwest.** Involved in developing the North Region Active Transportation Plan, which prioritizes the Cherry Bend Trail. Also provides staff to TTCI. They also worked with the Township and LCRC on the TAP Grant application.
10. **Disability Network Northern Michigan.** A nonprofit serving individuals with disabilities, their families, and the broader community of Northern Michigan since 2002. *Letter of Support attached.*
11. **Norte Youth Cycling.** Northern Michigan-based non-profit organization dedicated to building stronger, more connected, and walk/bike-friendly communities by empowering youth through cycling programs and advocacy. *Letter of Support attached.*

**Please list any other government officials that you have engaged with regarding this funding request:**

The Cherry Bend Regional Trail Connector and Cherry Bend Park Satellite Trailhead project has involved coordination with multiple government officials and agencies at the local, regional, and state levels. Officials engaged in discussions regarding funding for this project include:

1. Leelanau County Road Commission (LCRC) – Brendan Mullane, Managing Director; Craig Brown, Engineer.
  - Actively involved in project planning, engineering, and funding efforts.
  - Submitted a TAP Grant application for additional funding.
2. Elmwood Township Board and Supervisor.
  - The Township Board and Township Supervisor Jeff Shaw have been instrumental in advocating for funding, including engagement with state legislators and funding agencies. *Resolution of support attached.*
3. Michigan Department of Transportation (MDOT) – Dan Wagner, Traverse City Transportation Service Manager.
  - MDOT is a key stakeholder due to the 2025 M-22 reconstruction project, which includes a TART Trail extension to Cherry Bend Road. Coordination with MDOT has helped align the Regional Trail Connector with broader transportation improvements. *Letter of Support attached.*
4. Michigan Department of Natural Resources (DNR) – Charamy Cleary
  - We have been in discussion with the DNR officials regarding the project and plan to submit a Michigan Natural Resources Trust Fund grant application by April 1, 2025.
5. City of Traverse City – Liz Vogel, City Manager
  - Jeff Shaw, Township Supervisor has been discussing this project with the City for years. Vogel is a voting member for TTCI and voted in support of improvements on Cherry Bend Road.
6. Traverse Transportation Coordinating Initiative (TTCI) – Various local officials
  - Provided \$1,093,000 in awarded funding in January 2025. *Minutes attached.*

**Please share any information on your operations plan:**

As this is primarily a construction project, the operations plan includes finalizing engineering, securing funding, preparing for construction, and ensuring long-term maintenance.

**Engineering and Construction Timeline**

- The project is currently at approximately 50% engineering and design completion.

- Engineering and design work will continue through 2025, ensuring that all necessary permits, environmental reviews, and final design specifications are completed.
- The goal is to finalize engineering while continuing to seek funding to fill the gap in time for construction to begin in spring of 2026.
- Construction will take place from spring to fall of 2026, aligning with the Leelanau County Road Commission's planned improvements on Cherry Bend Road.

#### Trail Maintenance Plan

- The long-term maintenance of the Cherry Bend Trail is a key federal requirement for the Transportation Alternatives Program (TAP) award. As such, Elmwood Township has pledged to maintain the trail with funding incorporated into the Township's annual budget. Maintenance activities include:
  - Surface upkeep (asphalt repairs, boardwalk inspections)
  - Vegetation management (clearing overgrowth, ensuring visibility)
  - Snow removal in winter months where appropriate
  - Signage updates and safety inspections

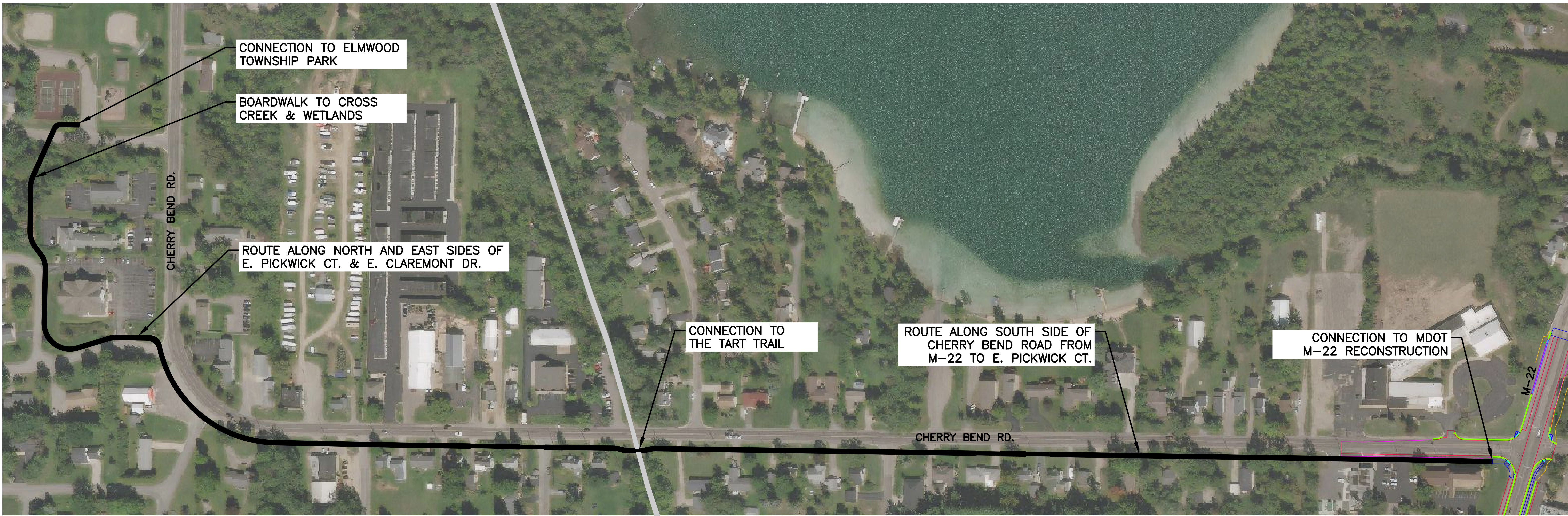
#### **Please share any information on similar projects:**

As mentioned previously, one critical reason for this request is the extension of the TART Trail along M-22 to Cherry Bend Road. This project, to be completed in Summer 2025, will provide non-motorized access along Grand Traverse Bay to Cherry Bend Road. However, with no on or off-road pedestrian/bike facilities beyond that point, bikers will be stranded and forced to navigate unsafe narrow shoulders.

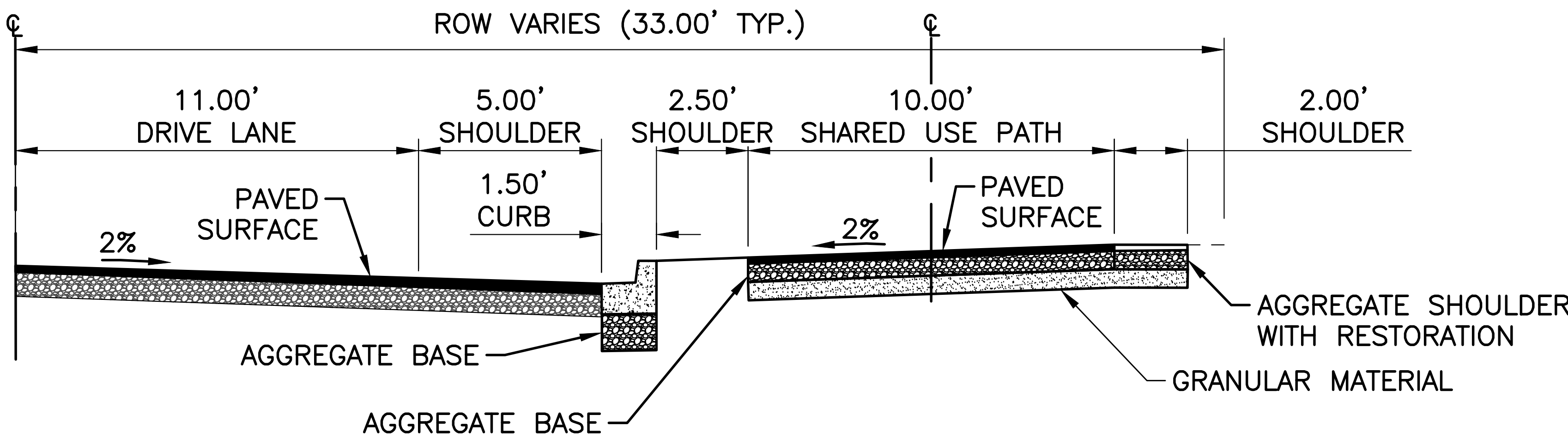
**Please share any other relevant information that our office should know regarding this request:** The Township would be more than happy to discuss any and all aspects regarding this project. Please do not hesitate to reach out with any questions.



PROJECT MANAGER: KEN SCHWERTD, PE  
C:\PW\_WORK\WADE-TRIM\NSMITH\01234767\CHERRY\_BEND\_SIDEWALK\_CONCEPT.DWG - 1 - FULL SCALE GREY SCALE.STB - PLOTTED 2/24/2025 1:01 PM BY SMITH, NATHAN



**CHERRY BEND ROAD PROPOSED  
MULTIUSE ROUTE**



PROPOSED TYPICAL CROSS SECTION  
M-22 TO E. PICKWICK CT.



**WADE  
TRIM**  
10850 East Traverse Highway, Suite 2260  
Traverse City, MI 49684  
231.947.7400  
www.wadetrim.com

ELMWOOD CHARTER TOWNSHIP  
10090 EAST LINCOLN ROAD  
TRAVERSE CITY, MI 49684

CHERRY BEND ROAD MULTI-  
USE TRAIL OVERVIEW

JOB NO.  
**ELM2019.01C**

SHEET  
**1**





## Engineer's Opinion of Costs

<b>Project Number:</b> ELM2019.02C <b>Estimate Number:</b> 2: 30% Remove Road Work <b>Project Type:</b> Miscellaneous <b>Location:</b> Elmwood Township <b>Description:</b> Shared Use Path along Cherry Bend from Township Park to M-22	<b>Project Engineer:</b> Joseph Slonecki <b>Date Created:</b> 2/11/2025 <b>Date Edited:</b> 2/18/2025 <b>Fed/State #:</b> <b>Fed Item:</b> <b>Control Section:</b>
--	---

Line	Pay Item	Description	Quantity	Units	Unit Price	Total
<b>Category: 0001 Trail</b>						
0001	1100001	Mobilization, Max (10%)	1.000	LSUM	\$165,000.00	\$165,000.00
0002	2010001	Clearing	0.200	Acre	\$50,000.00	\$10,000.00
0003	2020002	Tree, Rem, 19 inch to 36 inch	2.000	Ea	\$3,800.00	\$7,600.00
0004	2020004	Tree, Rem, 6 inch to 18 inch	3.000	Ea	\$1,500.00	\$4,500.00
0005	2030001	Culv, Rem, Less than 24 inch	17.000	Ea	\$500.00	\$8,500.00
0006	2050010	Embankment, CIP	1,012.000	Cyd	\$20.00	\$20,240.00
0007	2050016	Excavation, Earth	400.000	Cyd	\$15.00	\$6,000.00
0008	2050023	Granular Material, CI II	788.000	Cyd	\$40.00	\$31,520.00
0009	2080020	Erosion Control, Inlet Protection, Fabric Drop	15.000	Ea	\$127.00	\$1,905.00
0010	2080036	Erosion Control, Silt Fence	3,793.000	Ft	\$2.50	\$9,482.50
0011	3020016	Aggregate Base, 6 inch	3,591.000	Syd	\$30.00	\$107,730.00
0012	3070130	Shld, CI II, 8 inch	793.000	Syd	\$20.00	\$15,860.00
0013	5010061	HMA Approach	149.000	Ton	\$150.00	\$22,350.00
0014	7057050	_ Helical Pile	30.000	Ea	\$1,250.00	\$37,500.00
0015	7057050	_ Helical Pile, Load Test	2.000	Ea	\$3,000.00	\$6,000.00
0016	7057051	_ Helical Pile Equipment, Furn	1.000	LSUM	\$8,000.00	\$8,000.00
0017	7057051	_ Structure, Timber	1.000	LSUM	\$175,000.00	\$175,000.00
0018	7097001	_ Structure, Timber, Railing, Metal Panel Insert	360.000	Ft	\$90.00	\$32,400.00
0019	8030010	Detectable Warning Surface	270.000	Ft	\$65.00	\$17,550.00
0020	8030030	Curb Ramp Opening, Conc	341.000	Ft	\$34.00	\$11,594.00
0021	8030046	Sidewalk, Conc, 6 inch	874.000	Sft	\$10.00	\$8,740.00
0022	8032002	Curb Ramp, Conc, 6 inch	2,125.000	Sft	\$12.00	\$25,500.00

Line	Pay Item	Description	Quantity	Units	Unit Price	Total
0023	8060030	Shared use Path, Grading	4,178.000	Ft	\$20.00	\$83,560.00
0024	8060040	Shared use Path, HMA	594.000	Ton	\$150.00	\$89,100.00
0025	8070095	Post, Mailbox	20.000	Ea	\$200.00	\$4,000.00
0026	8080011	Fence, Chain Link, 48 inch	300.000	Ft	\$50.00	\$15,000.00
0027	8100371	Post, Steel, 3 pound	272.000	Ft	\$8.50	\$2,312.00
0028	8100402	Sign, Type III, Erect, Salv	15.000	Ea	\$40.00	\$600.00
0029	8100405	Sign, Type IIIB	66.000	Sft	\$18.00	\$1,188.00
0030	8107001	_ Post, Wood, 4 inch by 4 inch, Direct Embedment	400.000	Ft	\$100.00	\$40,000.00
0031	8120170	Minor Traf Devices (10%)	1.000	LSUM	\$165,000.00	\$165,000.00
0032	8127051	_ Traffic Control	1.000	LSUM	\$50,000.00	\$50,000.00
0033	8162006	Slope Restoration, Non-Freeway, Type F	3,369.000	Syd	\$10.00	\$33,690.00
0034	8162006	Slope Restoration, Non-Freeway, Type F _ Misc Restoration	1,000.000	Syd	\$10.00	\$10,000.00
0035	8230096	Hydrant, Relocate, Case 2	1.000	Ea	\$10,000.00	\$10,000.00
0036	8240001	Contractor Staking	1.000	LSUM	\$50,000.00	\$50,000.00

**Category 0001 Total: \$1,287,421.50**

**Category: 0002 Storm Sewer and Curb**

0037	2030011	Dr Structure, Rem	1.000	Ea	\$800.00	\$800.00
0038	2030015	Sewer, Rem, Less than 24 inch	20.000	Ft	\$25.00	\$500.00
0039	2040020	Curb and Gutter, Rem	794.000	Ft	\$15.00	\$11,910.00
0040	4010542	Culv, CI E, 24 inch	20.000	Ft	\$200.00	\$4,000.00
0041	4010608	Culv, CI F, 15 inch	56.000	Ft	\$75.00	\$4,200.00
0042	4020033	Sewer, CI A, 12 inch, Tr Det B	944.000	Ft	\$80.00	\$75,520.00
0043	4020034	Sewer, CI A, 15 inch, Tr Det B	600.000	Ft	\$120.00	\$72,000.00
0044	4020600	Sewer, CI E, 12 inch, Tr Det B	705.000	Ft	\$100.00	\$70,500.00
0045	4020601	Sewer, CI E, 15 inch, Tr Det B	1,231.000	Ft	\$125.00	\$153,875.00
0046	4021265	Dewatering System, Trench	1,000.000	Ft	\$50.00	\$50,000.00
0047	4030045	Dr Structure Cover, Type J	14.000	Ea	\$1,050.00	\$14,700.00
0048	4030210	Dr Structure, 48 inch dia	16.000	Ea	\$3,100.00	\$49,600.00
0049	4030250	Dr Structure, Add Depth of 48 inch dia, 8 foot to 15 foot	5.000	Ft	\$160.00	\$800.00
0050	4040061	Underdrain, Subbase, 4 inch	500.000	Ft	\$10.00	\$5,000.00

Line	Pay Item	Description	Quantity	Units	Unit Price	Total
0051	8020036	Curb and Gutter, Conc, Det F2	3,576.000	Ft	\$35.00	\$125,160.00
Category 0002 Total: \$638,565.00						
Category: 0004 Engineering						
0052	8247051	_ Construction Inspection	1.000	LSUM	\$198,100.00	\$198,100.00
0053	8247051	_ Final Engineering	1.000	LSUM	\$137,300.00	\$137,300.00
0054	8247051	_ Preliminary Engineering	1.000	LSUM	\$92,548.17	\$92,548.17
0055	8247051	_ Routine Maintenance	1.000	LSUM	\$864.00	\$864.00
0056	8247051	_ ROW Consultant	1.000	LSUM	\$150,000.00	\$150,000.00
Category 0004 Total: \$578,812.17						
Estimate Total: \$2,504,798.67						



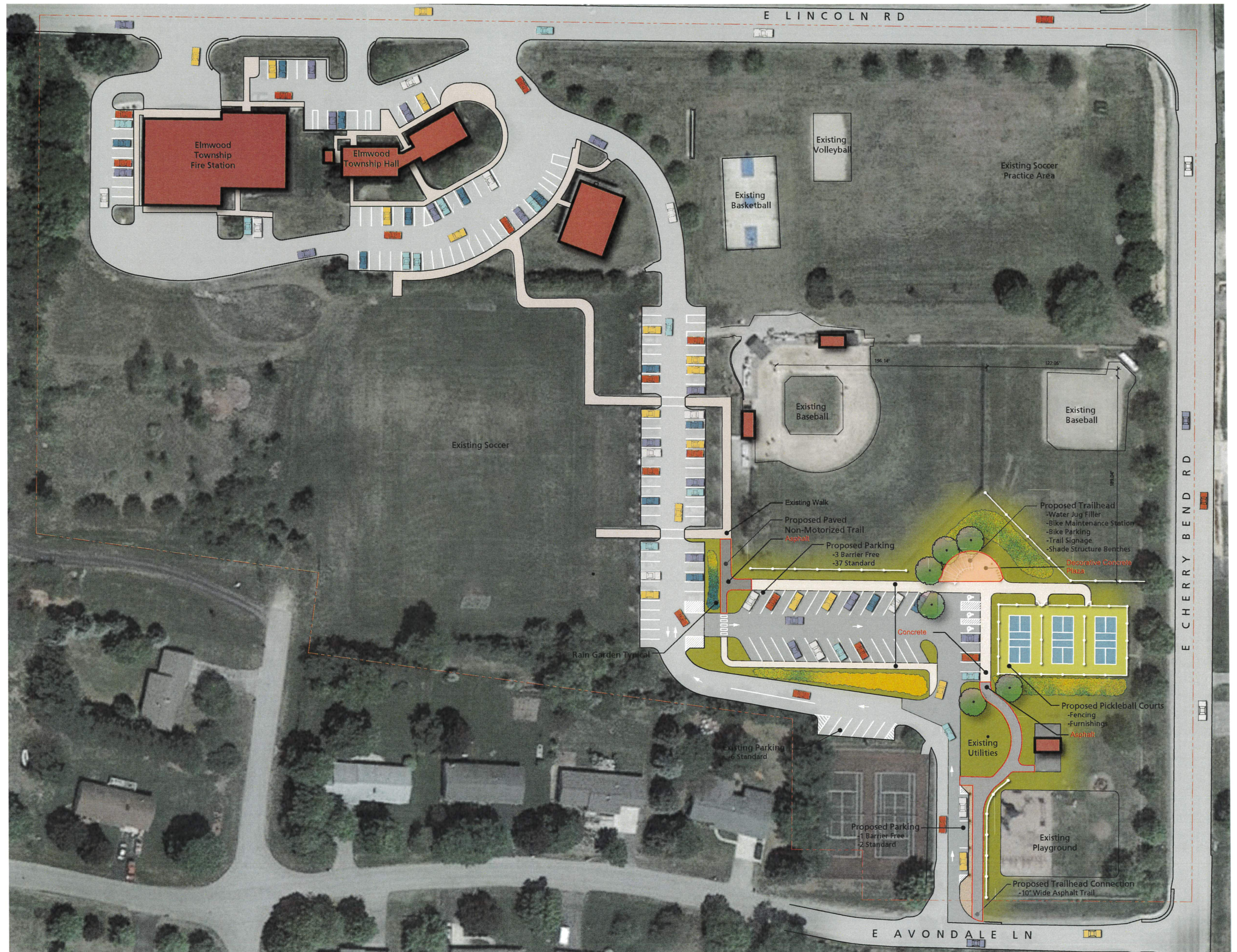
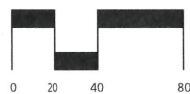


# Cherry Bend Park

Elmwood Township, Michigan

## Overall Site Design Plan

October, 2024







Beckett & Raeder, Inc.  
PRELIMINARY OPINION OF PROBABLE CONSTRUCTION COST  
Cherry Bend Park - Pickleball & Site Improvements  
Draft Site Plan  
Elmwood Township  
29-Oct-24



DESCRIPTION	QTY.	UNIT	UNIT COST	SUBTOTAL	TOTAL
<b>SITework</b>					
<b>DEMOLITION &amp; SITE PREPARATION, ALL IMPROVEMENTS</b>					
Mobilization	1	ls	\$2,000.00	\$2,000.00	
Erosion Control Measures	1	ls	\$1,000.00	\$1,000.00	
Strip Lawn and Topsoil	5258	sy	\$5.00	\$26,290.00	
Sawcut Bituminous Pavement	275	lf	\$2.00	\$550.00	
Remove Bituminous Pavement	900	sy	\$18.00	\$16,200.00	
Tree Removal	5	ea	\$350.00	\$1,750.00	
Remove 10' Chain Link Fence	385	lf	\$15.00	\$5,775.00	
Remove Baseball Backstop	2	ea	\$5,000.00	\$10,000.00	
Salvage Wood Fence	120	lf	\$20.00	\$2,400.00	
<b>EARTHWORK</b>					
Earthwork	1	ls	\$12,500.00	\$12,500.00	
<b>PROPOSED PARKING AND WALKS</b>					
Bituminous Pavement	2515	sy	\$50.00	\$125,750.00	
Pavement Striping	1	ls	\$7,500.00	\$7,500.00	
Concrete Walks	7630	sf	\$10.00	\$76,300.00	
New 10' Chain Link Fence (Outfield)	320	lf	\$130.00	\$41,600.00	
Parking Bollards	4	ea	\$200.00	\$800.00	
Accessible Parking Sign	5	ea	\$500.00	\$2,500.00	
SUBTOTAL				\$332,915.00	
<b>CONTINGENCIES</b>					
10% Design and Engineering				\$33,291.50	
10% General Conditions				\$33,291.50	
5% Construction Contingency				\$16,645.75	
SUBTOTAL					<b>\$416,143.75</b>

<b>PICKLEBALL COURTS (3 TOTAL)</b>					
Bituminous Pavement	860	sy	\$50.00	\$43,000.00	
Court Surfacing	860	sy	\$22.50	\$19,350.00	
4' Chain Link Fence	216	lf	\$65.00	\$14,040.00	
6' Chain Link Fence	240	lf	\$95.00	\$22,800.00	
4' Gate	3	ea	\$2,000.00	\$6,000.00	
Regulation Sign	1	ea	\$2,500.00	\$2,500.00	
Net Post	3	ea	\$600.00	\$1,800.00	
Net	3	ea	\$100.00	\$300.00	
SUBTOTAL				\$109,790.00	
<b>CONTINGENCIES</b>					
10% Design and Engineering				\$10,979.00	
10% General Conditions				\$10,979.00	
5% Construction Contingency				\$5,489.50	
SUBTOTAL					<b>\$137,237.50</b>

<b>TRAILHEAD AND AMENITIES</b>					
<b>PROPOSED IMPROVEMENTS</b>					
Decorative Concrete Plaza	1400	sf	\$12.00	\$16,800.00	
Shade Pergola	1	ls	\$12,500.00	\$12,500.00	
Water Jug Filler	1	ea	\$3,500.00	\$3,500.00	
Bicycle Maintenance Station	1	ea	\$1,500.00	\$1,500.00	
Bike Rack Loops	5	ea	\$750.00	\$3,750.00	
Wayfinding Signage	2	ea	\$500.00	\$1,000.00	
SUBTOTAL				\$39,050.00	
<b>CONTINGENCIES</b>					
10% Design and Engineering				\$3,905.00	
10% General Conditions				\$3,905.00	
5% Construction Contingency				\$1,952.50	
SUBTOTAL					<b>\$48,812.50</b>

<b>LANDSCAPING/ SITE RESTORATION</b>					
Canopy Trees	3	ea	\$600.00	\$1,800.00	
Rain Garden / Bioswales	670	sy	\$115.00	\$77,050.00	
Seeding and Site Restoration	1	ls	\$5,000.00	\$5,000.00	
				\$83,850.00	
<b>CONTINGENCIES</b>					
10% Design and Engineering				\$8,385.00	
10% General Conditions				\$8,385.00	
5% Construction Contingency				\$4,192.50	
SUBTOTAL					<b>\$104,812.50</b>

**TOTAL PROJECT COST**

**\$707,006.25**



---

# City of Traverse City

## Office of the City Manager

GOVERNMENTAL CENTER  
400 Boardman Avenue  
Traverse City, MI 49684  
(231) 922-4440  
(231) 922-4476 fax  
tcmanage@traversecitymi.gov



March 14, 2025

Representative Coffia  
Anderson House Office Building  
124 N Capitol Avenue  
Lansing, MI 48933

Re: Charter Township of Elmwood – Cherry Bend Regional Trail Connector and Cherry Bend Park Satellite Trailhead Project – State Funding Request

Dear Representative Coffia:

Please accept this letter of support for the Charter Township of Elmwood's Congressionally Directed Spending request for the Cherry Bend Regional Trail Connector and Cherry Bend Park Satellite Trailhead Project.

This project is essential to the health, safety, and welfare of residents and visitors in and around Elmwood Township. This may be a bold statement, but it is true; in 2025, MDOT's anticipated 2025 fall completion extension of the Traverse Area Recreation and Transportation Trails (TART) Trail along M22 will create a trail "dead end" at M22 and Cherry Bend Road. If the Township's proposed trail connector project stalls, there will be no off-street connection from M22 to TART's Leelanau Trail Cherry Bend Trailhead; there are no improved pedestrian/non-motorized facilities along Chery Bend Road resulting in pedestrians using the road shoulder and adjacent grassed right-of-way.

The Township has been working with the Leelanau County Road Commission and TART to develop a cost-effective 10' wide nonmotorized trail to connect the impending TART Trail extension along M22 from the intersection of M22 and Cherry Bend, to Leelanau Trail's Cherry Bend Trailhead, and then up to the Township's Cherry Bend Park. Recognizing that the trail connection dead-ending at a playground creates a safety issue, the Township has gone on to develop a conceptual plan for its Cherry Bend Park. This conceptual plan contains a 10' wide asphalt trailhead connection, trailhead with decorative plaza, 40 new parking spaces, concrete walks, safety improvements to parking off of E Avondale Ln, pickleball courts, and sitework (landscaping, grading, stormwater improvements, etc.).

This project will connect existing regional pathways, creating a safe off-street route for users from Suttons Bay Township to Acme, while also making itself available to immediately adjacent residential neighborhoods and businesses. The final terminus of the proposed pathway at the Elmwood Township Park and Hall will link Township recreational assets to the existing regional trail network and will allow the immediate and surrounding community's safe access to the park and adjacent trails.

Your support and endorsement for the funding of the Cherry Bend Regional Trail Connector and Cherry Bend Park Satellite Trailhead Project would ensure a safe connection between existing recreational assets within a growing Northern Michigan community. The City of Traverse City strongly supports this initiative. Thank you for considering this request.

Sincerely,

A handwritten signature in black ink, appearing to read "Eliz Vogel". The signature is fluid and cursive, with the first name "Eliz" and the last name "Vogel" clearly distinguishable.

Elizabeth Vogel  
City Manager

March 13, 2025

Representative Coffia  
Anderson House Office Building  
124 N Capitol Avenue  
Lansing, MI 48933

Re: Charter Township of Elmwood – Cherry Bend Park and Trail Connector – State Funding Request

Dear Representative Coffia,

On behalf of the 520+ members of the Cherry Capital Cycling Club please accept this letter of support for the Charter Township of Elmwood's request for State funding for the Cherry Bend Park and Trail Connector project. Our mission is to promote a cycling community as part of a healthy lifestyle. This includes advocating for Safe Streets for all residents in our five County region.

This project is essential to the health, safety, and welfare of residents and visitors in and around Elmwood Township. This may be a bold statement, but it is true; in 2025, MDOT's anticipated 2025 fall completion extension of the Traverse Area Recreation and Transportation Trails (TART) Trail along M22 will create a trail "dead end" at M22 and Cherry Bend Road. If the Township's proposed trail connector project stalls, there will be no off-street connection from M22 to the Cherry Bend TART Trailhead; there are no improved pedestrian/non-motorized facilities along Cherry Bend Road resulting in pedestrians using the road shoulder and adjacent grassed right-of-way.

The Township has been working with the Leelanau County Road Commission and TART to develop a cost-effective 10' wide non-motorized trail to connect the impending TART Trail extension along M22 from the intersection of M22 and Cherry Bend, to TART's Cherry Bend Trailhead, and then up to the Township's Cherry Bend Park. Recognizing that the trail connection dead-ending at a playground creates a safety issue, the Township has gone on to develop a conceptual plan for it's Cherry Bend Park. This conceptual plan contains a 10' wide asphalt trailhead connection, trailhead with decorative plaza, 40 new parking spaces, concrete walks, safety improvements to parking off of E Avondale Ln, pickleball courts, and sitework (landscaping, grading, stormwater improvements, etc.).

This project will connect existing regional pathways, creating a safe off-street route for users from Suttons Bay Township to Acme, while also making itself available to immediately adjacent residential neighborhoods and businesses. The final terminus of the proposed pathway at the Elmwood Township Park and Hall will link Township recreational assets to the existing regional trail network and will allow the immediate and surrounding community's safe access to the park and adjacent trails.

Your support and endorsement for the funding of the Cherry Bend Trail Connection would ensure a safe connection between existing recreational assets within a growing Northern Michigan community. Cherry Capital Cycling Club strongly supports this initiative. Thank you for considering this request.

With gratitude,

A handwritten signature in black ink that reads "James Pecott". The script is fluid and cursive, with the first name "James" and last name "Pecott" clearly legible.

James Pecott  
President  
Cherry Capital Cycling Club  
President@CherryCapitalCyclingClub.org

A small, faint handwritten mark or signature, possibly a second signature or a mark made during the drafting of the letter.

• •





March 13, 2025

Representative Coffia  
Anderson House Office Building  
124 N Capitol Avenue  
Lansing, MI 48933

Re: Charter Township of Elmwood – Cherry Bend Park and Regional Trail Connector – State Funding Request

Dear Representative Coffia,

Please accept this letter of support for the Charter Township of Elmwood's request for State funding for the Cherry Bend Park and Non-Motorized Trail Connector project.

We enthusiastically support this project as it would provide a critical resource for the health, safety, and welfare of residents and visitors in and around Elmwood Township. With the completion of the MDOT M-22 road and trail project in the fall of 2025, the Elmwood Park & Trail project would provide the link necessary to connect MDOT's new non-motorized trail extension to important community connections located immediately to the west.

The Township has been working with the Leelanau County Road Commission and TART Trails to develop a cost-effective 10' wide non-motorized trail to serve the hundreds of residents that live along/near Cherry Bend Road as well as people wishing to connect to the adjacent businesses, regional trail network, and Township parks. Recognizing that the trail connection would end short of park amenities, the Township has gone on to develop a conceptual plan for its Cherry Bend Park that includes a 10' wide asphalt trailhead connection, trailhead with a decorative plaza, 40 new parking spaces, concrete walks, and improved landscaping, grading, and stormwater management.

Your support and endorsement for the funding of the Cherry Bend Trail Connection would help ensure a vital connection between existing non-motorized assets within a growing Northern Michigan community. Traverse Area Recreation and Transportation Trails strongly supports this initiative. Thank you for considering this request.

Sincerely,

Julie Clark  
CEO, TART Trails





GRETCHEN WHITMER  
GOVERNOR

STATE OF MICHIGAN  
**DEPARTMENT OF TRANSPORTATION**  
LANSING

BRADLEY C. WIEFERICH, P.E.  
DIRECTOR

March 14, 2025

Jeff Shaw  
Elmwood Charter Township Supervisor  
10090 E. Lincoln Rd.  
Traverse City, MI 49684

Dear Jeff Shaw:

The Michigan Department of Transportation (MDOT) is investing nearly \$26 million in 2025 to reconstruct a portion of the M-22 corridor. Our project includes the creation of substantial pedestrian enhancements that will result in an uninterrupted linkage to the city center of nearby Traverse City. The pedestrian infrastructure planned for our project will terminate at the Cherry Bend Road intersection in Elmwood Township.

The Charter Township of Elmwood is seeking to secure funding for a project that would provide a critical connection from the terminal end of our pedestrian facilities on M-22 to the west, linking to the existing TART trail and the Elmwood Charter Township Park. In cooperation with the Leelanau County Road Commission and TART, the township hopes to construct a cost-effective, 10-foot-wide nonmotorized trail and trailhead along Cherry Bend Road that intersects with M-22 to make this vital connection.

On behalf of MDOT, I am writing to express support for the Charter Township of Elmwood's efforts to secure funding for the Cherry Bend Regional Trail Connector and Cherry Bend Park Satellite Trailhead Project that has been conceived.

I hope that every consideration will be given to providing funding for this township project so that it may be realized. Please do not hesitate to contact me at 231-941-1986 or [WagnerD2@Michigan.gov](mailto:WagnerD2@Michigan.gov) if I can provide additional information regarding this or any other transportation-related matter.

Sincerely,

A handwritten signature in blue ink, appearing to read "Dan Wagner".

Dan Wagner, P.E.  
Manager  
MDOT Traverse City Transportation Service Center

cc: File



March 12, 2025



Representative Coffia  
Anderson House Office Building  
124 N Capitol Avenue  
Lansing, MI 48933

Re: Charter Township of Elmwood – Cherry Bend Park and Trail Connector – State Funding Request

Dear Representative Coffia,

Please accept this letter of support for the Charter Township of Elmwood's request for State funding for the Cherry Bend Park and Trail Connector project.

This project is essential to the health, safety, and welfare of residents and visitors in and around Elmwood Township. This may be a bold statement, but it is true; in 2025, MDOT's anticipated 2025 fall completion extension of the Traverse Area Recreation and Transportation Trails (TART) Trail along M22 will create a trail "dead end" at M22 and Cherry Bend Road. If the Township's proposed trail connector project stalls, there will be no off-street connection from M22 to the Cherry Bend TART Trailhead; there are no improved pedestrian/non-motorized facilities along Chery Bend Road resulting in pedestrians using the road shoulder and adjacent grassed right-of-way.

The Township has been working with the Leelanau County Road Commission and TART to develop a cost-effective 10' wide nonmotorized trail to connect the impending TART Trail extension along M22 from the intersection of M22 and Cherry Bend, to TART's Cherry Bend Trailhead, and then up to the Township's Cherry Bend Park. Recognizing that the trail connection dead-ending at a playground creates a safety issue, the Township has gone on to develop a conceptual plan for it's Cherry Bend Park. This conceptual plan contains a 10' wide asphalt trailhead connection, trailhead with decorative plaza, 40 new parking spaces, concrete walks, safety improvements to parking off of E Avondale Ln, pickleball courts, and sitework (landscaping, grading, stormwater improvements, etc.).

This project will connect existing regional pathways, creating a safe off-street route for users from Suttons Bay Township to Acme, while also making itself available to immediately adjacent residential neighborhoods and businesses. The final terminus of the proposed pathway at the Elmwood Township Park and Hall will link Township recreational assets to the existing regional trail network and will allow the immediate and surrounding community's safe access to the park and adjacent trails.

Your support and endorsement for the funding of the Cherry Bend Trail Connection would ensure a safe connection between existing recreational assets within a growing Northern Michigan community. Discovery Pier strongly supports this initiative. Thank you for considering this request.

Sincerely,

A handwritten signature in blue ink, appearing to read "Matt McDonough", with a stylized flourish at the end.

Matt McDonough  
CEO



**RESOLUTION 23-01:**

At the regular meeting of the Board of County Road Commissioners of Leelanau County held on February 7, 2023, the following Resolution Number 23-01 was offered by Robert Joyce, supported by Jim Calhoun for approval to submit a Grant Application for the Transportation Alternatives Program (TAP) in Partnership with Leelanau County Road Commission, Elmwood Township and Networks Northwest.

**WHEREAS**, the State of Michigan has funding through the Transportation Alternatives Program (TAP) to use federal transportation funds for specific activities that enhance the intermodal transportation system and provide safe alternative transportation options, and,

**WHEREAS**, Elmwood Township and the Leelanau County Road Commission desires to make improvements to Cherry Bend Road to accommodate safe multi-modal travel, within dedicated bicycle/pedestrian ways with a vision of increasing uptake and safety of alternative transportation options for residents and visitors, and to leverage benefits from its inclusion as part of the planned Michigan Department of Transportation (MDOT) M-22 Rebuilding Project in FY2025, and,

**WHEREAS**, the desired improvements would take place on Cherry Bend Road between M-22 and Elmwood Township Park for the creation of a multi-use path along the entire length of this street for increased bicycle and pedestrian safety, and,

**WHEREAS**, the draft 2023 Community Park, Recreation, Open Space and Greenways Plan for Elmwood Township state as an action objective to, "Provide a connection to the TART Trail from Cherry Bend Community Park; sidewalks along Cherry Bend from M-22 to Cherry Bend Community Park", and,

**WHEREAS**, additional public engagement will be solicited as part of the TAP application, and,

**WHEREAS**, Elmwood Township will provide the necessary match for the TAP grant if successfully awarded, and,

**WHEREAS**, Leelanau County Road Commission will be the applicant with support from Networks Northwest to draft the application and if successfully awarded Networks Northwest will perform grant reporting management activities in coordination with Leelanau County Road Commission to manage the grant requirements,

**NOW, THEREFORE, BE IT RESOLVED** that Elmwood Township and the Leelanau County Road Commission adopt a Resolution to authorize Leelanau County Road Commission in partnership with Networks Northwest to take the lead on a TAP grant application and to authorize the Supervisor of Elmwood Township and the Supervisor of Leelanau County Road Commission as signatory on any associated documents for the MDOT TAP Application.

**Commissioners**

Jim Calhoun  
John Popa  
Robert Joyce  
Greg Mikowski  
Garth Greenan

**Staff**

Manager – Brendan Mullane  
Superintendent – Dave Priest  
Finance Manager – Susan Boyd  
Engineer – Craig M Brown, PE  
Fleet Manager – Tim Trudell

**General Contact Info**

Phone (231) 271-3993  
Fax (231) 271-5612  
e-mail [lcrc@leelanauroads.org](mailto:lcrc@leelanauroads.org)  
<http://leelanaucountyroads.org>



Roll call vote: Ayes: Popa, Calhoun, Joyce and Greenan. Nays: None.  
Resolution is hereby adopted.

I hereby certify that the foregoing is a true copy of a resolution made and adopted at a regular meeting of the Board of County Road Commissioners of Leelanau County on the 7<sup>th</sup> day of February, 2023.

A handwritten signature in black ink, which appears to read "Susan E. Boyd", is written over a horizontal line.

Susan E. Boyd-Finance Manager-  
Secretary to the Board





March 11<sup>th</sup>, 2025

Elmwood Township  
10090 E. Lincoln Road  
Traverse City, MI 49684

**RE: Support of Elmwood Township's Application for Michigan Department of  
Natural Resource Trust Fund Grant for Cherry Bend Multi-Use Trail.**

Dear Grant Commission,

Disability Network Northern Michigan has had the opportunity to review the design plans for Elmwood Township's proposal for the addition of a multiuse trail at Cherry Bend Road. The addition of this trail would provide a new space for individuals to participate in recreational activities such as biking and walking, and provide further connectivity to existing trails in the area. We are pleased to support the grant application to improve accessibility and connectivity in Elmwood Township.

Disability Network Northern Michigan has been serving people with disabilities and their families since 2002. We are dedicated to providing information and assistance to individuals of all ages with a wide range of disabilities. Besides helping to advocate on the individual's behalf, we partner with communities, businesses, governments, and other organizations to bring about community change that benefits all people with different abilities. Our core services include individual and systems advocacy, aiding in attaining independent living skills, providing peer support, and helping with transitions between life stages. Finally, we advise and offer recommendations to responsible parties regarding the accessibility and usability of community projects, and we appreciate this opportunity to review and comment on the design plans for Elmwood Township's project for a multiuse trail at Cherry Bend Road.

We greatly appreciate the opportunity to review the site plans for the addition of the multiuse trail at Cherry Bend Road. The proposed project for this trail includes a ten-foot wide, paved path. This path provides a firm and stable ground surface allowing all users the ability to enjoy the trail. Additionally, the width of the trail exceeds ADA standards and will allow for a comfortable passing space for users of the trail. This new trail will provide a path that connects M-22 to Cherry Bend Park, increasing connectivity of the trail systems in the area. Additionally, the new trail would provide a connection with the existing TART Trail system, giving more inclusive opportunities for accessible trail use.

We are very excited for the proposed changes which will not only benefit all persons who reside in or visit Elmwood Township but will also truly facilitate a diverse community of people to enjoy the beauty of Northern Michigan. We encourage your approval of this grant application.

Sincerely,

A handwritten signature in blue ink that reads "Lacey Rouse". The signature is written in a cursive, flowing style.

Lacey Rouse, ADAC, CTRS  
Independent Living Specialist and ADA Coordinator  
Disability Network Northern Michigan



Happy. Healthy. Strong.

Representative Coffia  
Anderson House Office Building  
124 N Capitol Avenue  
Lansing, MI 48933

March 13, 2025

Dear Representative Coffia,

Please accept this letter of support for the Charter Township of Elmwood's request for State funding for the Cherry Bend Park and Trail Connector project.

This project is essential to the health, safety, and welfare of residents and visitors in and around Elmwood Township. This may be a bold statement, but it is true; in 2025, MDOT's anticipated 2025 fall completion extension of the Traverse Area Recreation and Transportation Trails (TART) Trail along M22 will create a trail "dead end" at M22 and Cherry Bend Road. If the Township's proposed trail connector project stalls, there will be no off-street connection from M22 to the Cherry Bend TART Trailhead; there are no improved pedestrian/non-motorized facilities along Cherry Bend Road resulting in pedestrians using the road shoulder and adjacent grassed right-of-way.

The Township has been working with the Leelanau County Road Commission and TART to develop a cost-effective 10' wide nonmotorized trail to connect the impending TART Trail extension along M22 from the intersection of M22 and Cherry Bend, to TART's Cherry Bend Trailhead, and then up to the Township's Cherry Bend Park. Recognizing that the trail connection dead-ending at a playground creates a safety issue, the Township has gone on to develop a conceptual plan for its Cherry Bend Park. This conceptual plan contains a 10' wide asphalt trailhead connection, trailhead with decorative plaza, 40 new parking spaces, concrete walks, safety improvements to parking off of E Avondale Ln, pickleball courts, and sitework (landscaping, grading, stormwater improvements, etc.).

This project will connect existing regional pathways, creating a safe off-street route for users from Suttons Bay Township to Acme, while also making itself available to immediately adjacent residential neighborhoods and businesses. The final terminus of the proposed pathway at the Elmwood Township Park and Hall will link Township recreational assets to the existing regional trail network and will allow the immediate and surrounding community's safe access to the park and adjacent trails.

Your support and endorsement for the funding of the Cherry Bend Trail Connection would ensure a safe connection between existing recreational assets within a growing Northern Michigan community. Norte Youth Cycling strongly supports this initiative. Thank you for considering this request.

With gratitude,  
Jill Sill

Executive Director  
(231) 668-2734



CHARTER TOWNSHIP OF ELMWOOD  
RESOLUTION 5 OF 2025  
RESOLUTION IN SUPPORT OF APPLICATIONS FOR FUNDING OPPORTUNITIES  
FOR THE CHERRY BEND TRAIL CONNECTOR PROJECT, CHERRY BEND ROAD  
IMPROVEMENTS, AND THE CHERRY BEND PARK TRAILHEAD, PARKING AND SITE  
IMPROVEMENTS.

WHEREAS, The Charter Township of Elmwood is tasked with promoting the health, safety, and welfare of its community; and

WHEREAS, in 2025, the Michigan Department of Transportation (MDOT) will construct improvements along M22 from M72 to Cherry Bend Road. These improvements include a 10' multi-use path along Grand Traverse Bay which will cross M22 at Elmwood Township's Marina and continue up to Cherry Bend Road. This multi-use path will end at M22 and Cherry Bend Road; and

WHEREAS, there is no safe off-street connection from the soon to be constructed trail along M22 to TART's Cherry Bend Trailhead and beyond; and

WHEREAS, the Township has been working with the Road Commission, TART, and Networks Northwest, on a partnership project to provide a safe off-street trail connection to existing trail and Township facilities along Cherry Bend Road; and

WHEREAS, the Township recognizes the importance of the following three, intertwined projects:

1. **Cherry Bend Road improvements.** Cherry Bend Road has a PASER Rating is a 3 and this is only expected to get worse as the road is expected to serve as a detour in 2025 while M22 is under construction. Anticipated pavement improvements by the Road Commission involve a crush and shape 3 ½" HMA overlay between the intersection of M22/Cherry Bend Rd to the intersection of Breithaupt Rd/Cherry Bend Rd. The estimated cost for this project is \$1,573,128.
2. **10' Wide Nonmotorized Cherry Bend Trail Connection.** The initial starting point of the project is at the intersection of Cherry Bend Road and M22, extending West along Cherry Bend to the intersection of E Pickwick Court, then following along the North Side of E Pickwick Court to E Claremont Drive and then following undeveloped reserved public ROW between adjacent private lands from E Claremont Drive to E Avondale Lane, ending at Elmwood Township's Cherry Bend Park. The surface is proposed to be HMA for approximately 4,178 feet with a 14' wide 200' length wooden boardwalk that is necessary for crossing an intermittent stream and adjacent wetlands between E Claremont Drive and E Avondale Lane. The total project incorporates a trail separated by a three-foot-wide greenspace with curb and gutter for managing runoff from the road surface. The project also incorporates signage and pedestrian detection plates at road crossings. The estimated cost for this project is \$2,504,798.67
3. **Cherry Bend Park Trailhead, Parking, and Site Improvements.** Connecting the trail to Cherry Bend Park will allow trail users to utilize Township facilities including bicycle racks, restrooms, picnic areas, and active recreation amenities. However, when the trail will be extended to Cherry Bend Park, there will be a lack of parking with no clear trailhead or wayfinding. The Township Board acknowledges these anticipated needs, so in conjunction with the desire to pursue pickleball courts for its aging population, the Township developed a conceptual site plan for Cherry Bend Park calling for a 10' wide asphalt trailhead connection, trailhead with decorative plaza, 40 new parking spaces, concrete walks, safety improvements to parking off of E Avondale Ln, pickleball courts, and sitework (landscaping, grading, stormwater improvements, etc.) The estimated cost for this of the project is \$707,006.25.

NOW, THEREFORE BE IT RESOLVED THAT the Township Board is in support of having Staff to continue to pursue funding opportunities to help with the cost of any portion(s) of the above referenced projects. This includes, but is not limited to, submitting any portion of the projects for Congressionally Directed Spending.

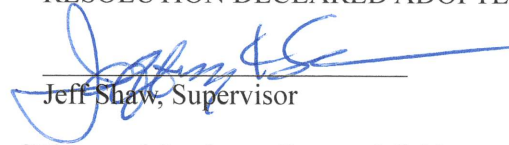
Upon a roll call vote, the following voted:

AYE: Don Gallagher, Mikowski, Darga, Jordan Gallagher, Preston, and Shaw

NAY: None


ABSENT: Lautner

RESOLUTION DECLARED ADOPTED

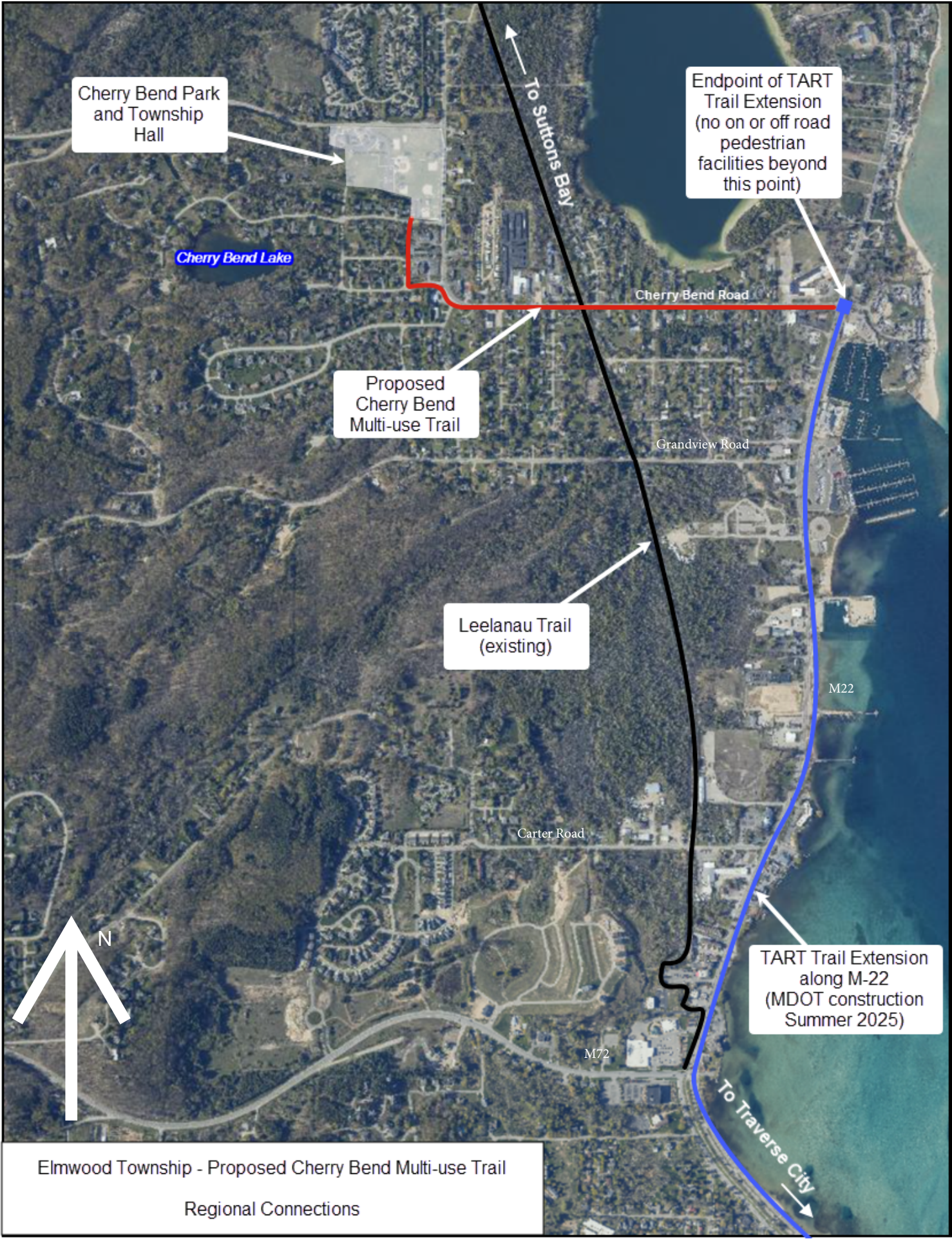
  
\_\_\_\_\_  
Jeff Shaw, Supervisor

I, the undersigned, the Clerk of the Charter Township of Elmwood, Leelanau County, Michigan, do hereby certify that the foregoing is a true and complete copy of certain proceedings taken by the Township Board of said municipality at its regular meeting held on March 10, 2025 relative to adoption of the resolution therein set forth; that said meeting was conducted and public notice of said meeting was given pursuant to and in full compliance with the Open Meetings Act, being Act 267, Public Acts of Michigan, 1976, and that the minutes of said meeting were kept and will be or have been made available as required by said Act.

Dated: March 11, 2025

  
\_\_\_\_\_  
Connie Preston, Clerk





Elmwood Township - Proposed Cherry Bend Multi-use Trail  
Regional Connections



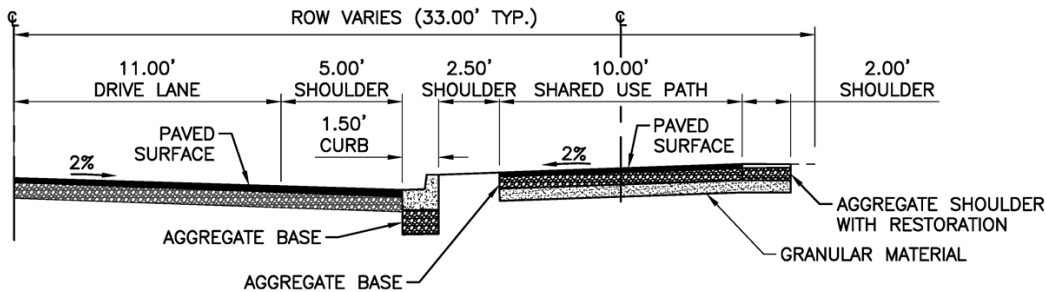


PROJECT MANAGER: KEN SCHWERT, P.E.  
CL:\PW\WORK\WADE-TRIM\SMITH\01234787\CHERRY BEND SIDEWALK CONCEPT.DWG - 1 - FULL SCALE GREY SCALE.SIB - PLOTTED 2/24/2025 1:01 PM BY SMITH, NATHAN

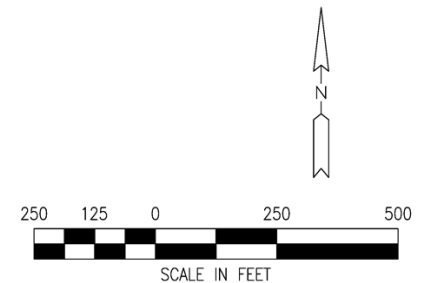
## Photo Locations



### CHERRY BEND ROAD PROPOSED MULTIUSE ROUTE



PROPOSED TYPICAL CROSS SECTION  
M-22 TO E. PICKWICK CT.



10850 East Traverse Highway, Suite 2260  
Traverse City, MI 49684  
231.947.7400  
www.wadetrtrim.com

ELMWOOD CHARTER TOWNSHIP  
10090 EAST LINCOLN ROAD  
TRAVERSE CITY, MI 49684

CHERRY BEND ROAD MULTI-  
USE TRAIL OVERVIEW

JOB NO.  
ELM2019.01C

SHEET  
1





Google Street View Images of portions of project area



Photo 1. E Cherry Bend Road looking East, showing current cycling conditions.





Photo 2. E Cherry Bend Road at TART's Cherry Bend Trailhead, looking East.





Photo 3. Light Commercial traffic at the corner of E Cherry Bend Road at S Regal Street, looking West. Veterinarian Clinic is on the left.





Photo 4. E Cherry Bend Road at Sylvia Street, looking West. Curb cuts on the left are for commercial uses (Storage Units and Thompson Surgical Instruments)





Photo 5. E Cherry Bend Road just before S Meadowbrook Drive intersection, looking Northwest.



Photo 6. E Cherry Bend Road, at its curve in front of Cherry Bend Grocery looking Southeast.



